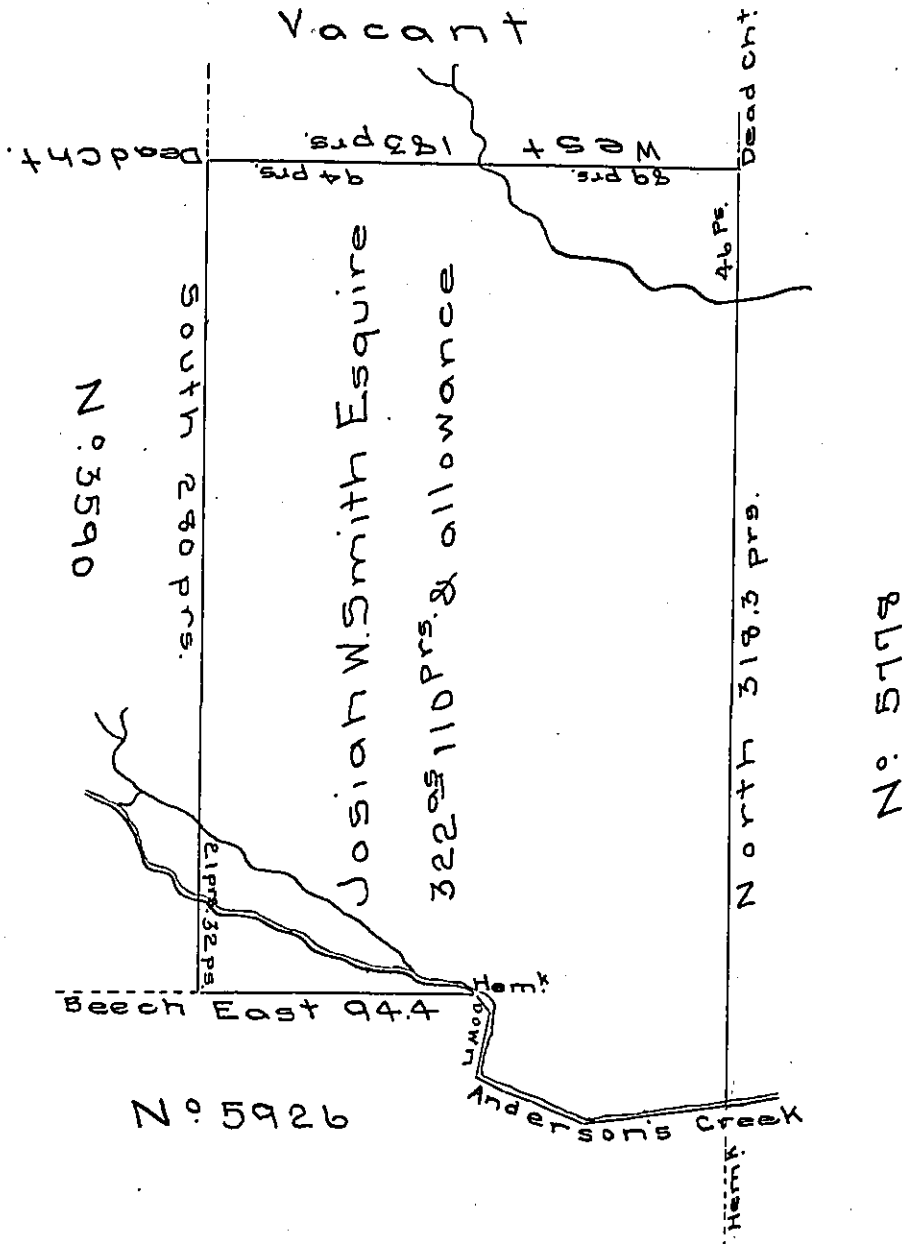


Supposed Vacant

Courses & distances down the Creek

- S 31 E 8 prs.
- S 9 W 23 prs.
- S 60 E 12 prs.
- S 77 E 10 prs.
- S 68 E 20 prs.
- N 82 E 50 prs
- 123 prs.



Situate in Pike township Clearfield County containing three hundred and twenty two acres & one hundred & ten perches and the usual allowance of six per cent for roads & surveyed the 23rd day of August 1839 for Josiah W. Smith Esquire by virtue of his warrant dated the 2nd August 1839 for three hundred acres.

Moses Boggs D.S

To Jacob Sallade Esquire }
 Surveyor General }

IN TESTIMONY that the above is a copy of the original remaining on file in the Department of Internal Affairs of Pennsylvania, made conformably to an Act of Assembly approved the 16th day of February 1833, I have hereunto set my hand and caused the Seal of said Department to be affixed at Harrisburg, this second day of January 1907.

George P. Brown
 Secretary of Internal Affairs.